

RS582 INSTRUCTIONS

TO BE INSTALLED BY A CERTIFIED MECHANIC ONLY | FOR RACE USE ONLY

BRAKE SIDE EXPLODED VIEW

FOR: SUZUKI GSXR600 & 750 2011-2012 ADJUSTABLE



INDEX



Lubricate



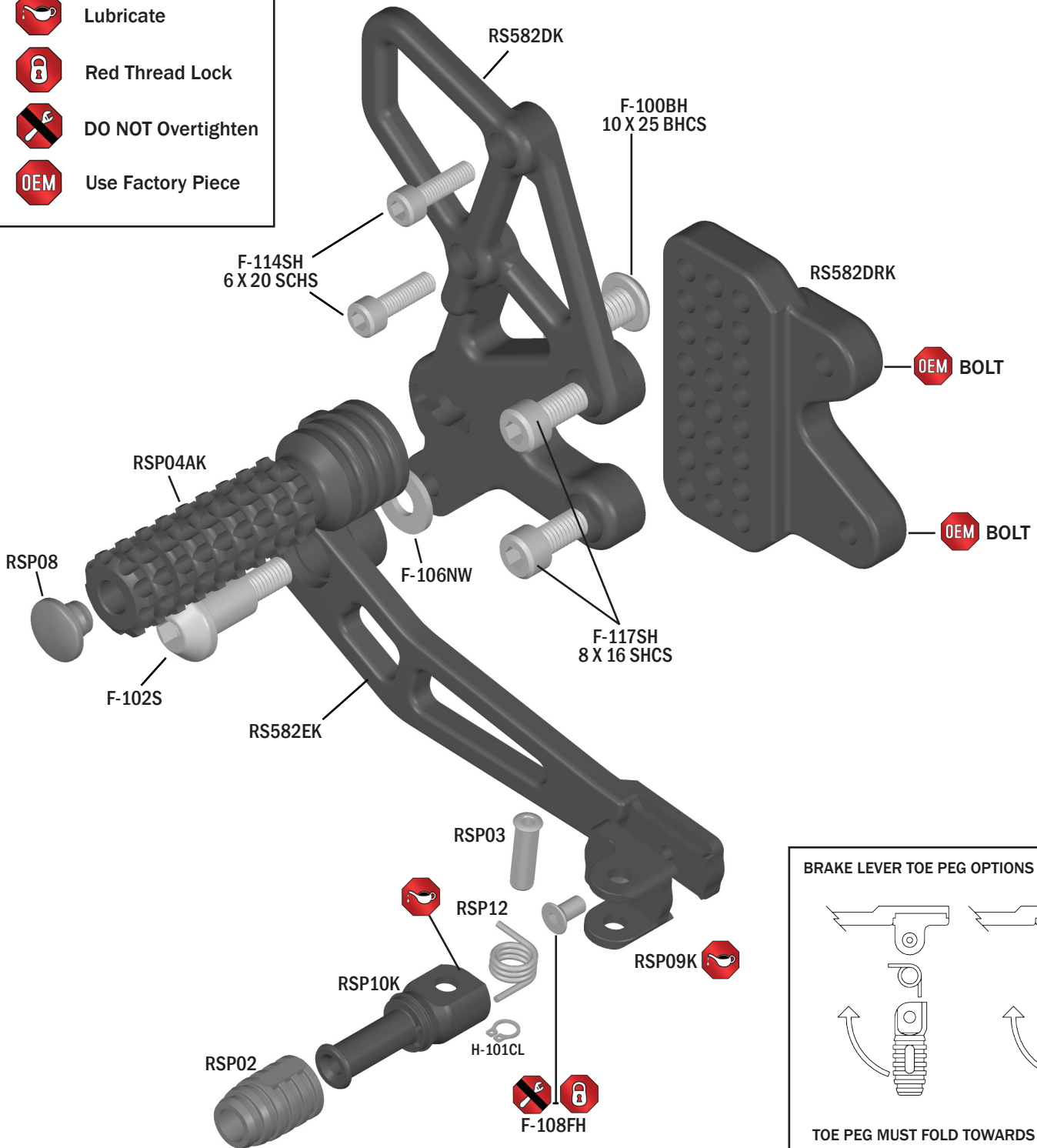
Red Thread Lock



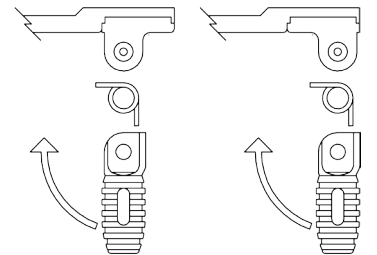
DO NOT Overtighten



Use Factory Piece



BRAKE LEVER TOE PEG OPTIONS - TOP VIEW



TOE PEG MUST FOLD TOWARDS FOOT PEG

BRAKE LIGHT INFO:

These rearsets do not use: OEM rear brake light switch, spring & lever return spring. In race form these rear sets no longer activate rear brake light from rear brake lever. Street use requires rear brake light to be activated by rear & front brake levers. To achieve rear brake light activation from rear brake lever use Vortex in-line pressure switch RS100.

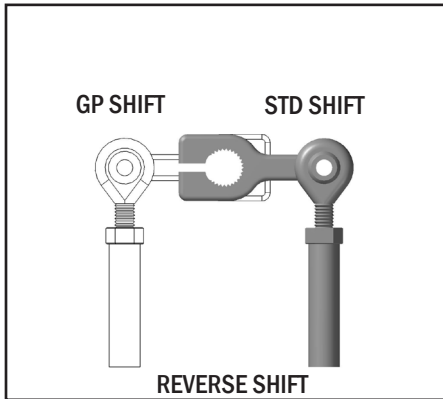


RS582 INSTRUCTIONS

TO BE INSTALLED BY A CERTIFIED MECHANIC ONLY | FOR RACE USE ONLY

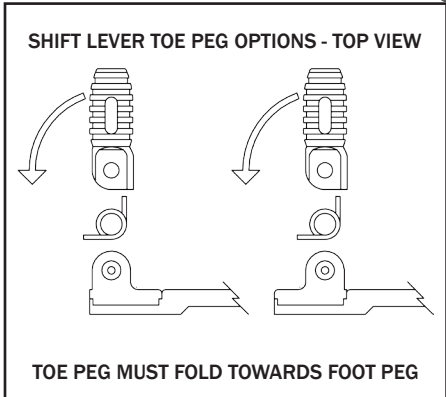
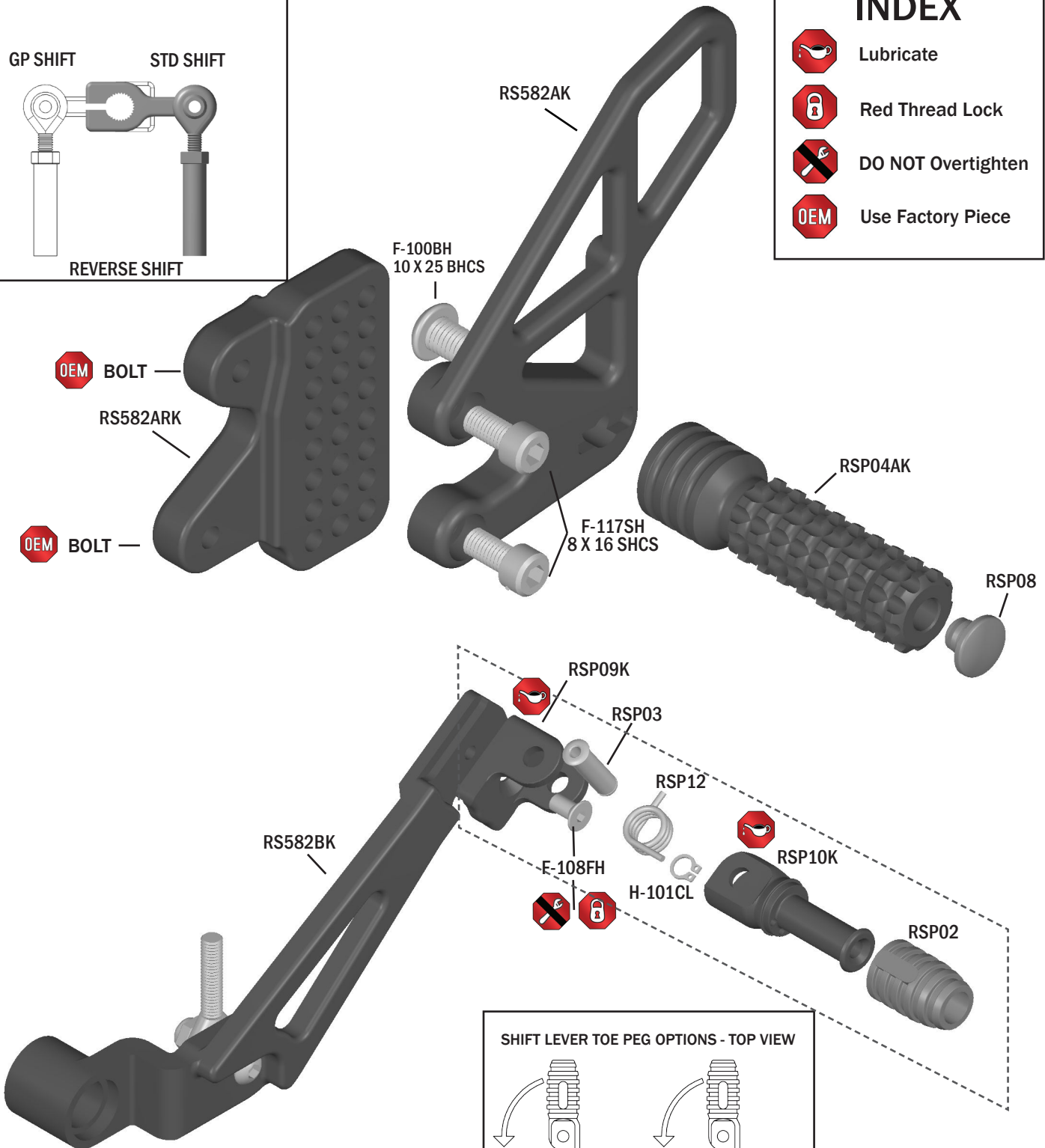
SHIFT SIDE EXPLODED VIEW

FOR: SUZUKI GSXR600 & 750 2011-2012 ADJUSTABLE



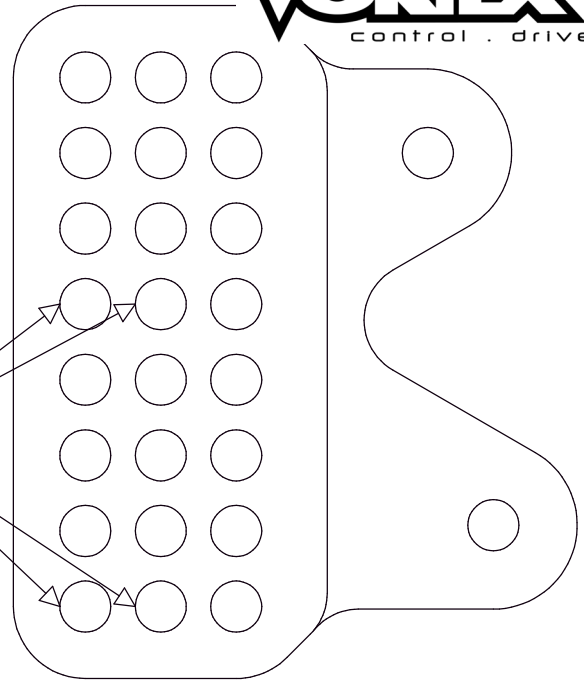
INDEX

- Lubricate
- Red Thread Lock
- DO NOT Overtighten
- Use Factory Piece

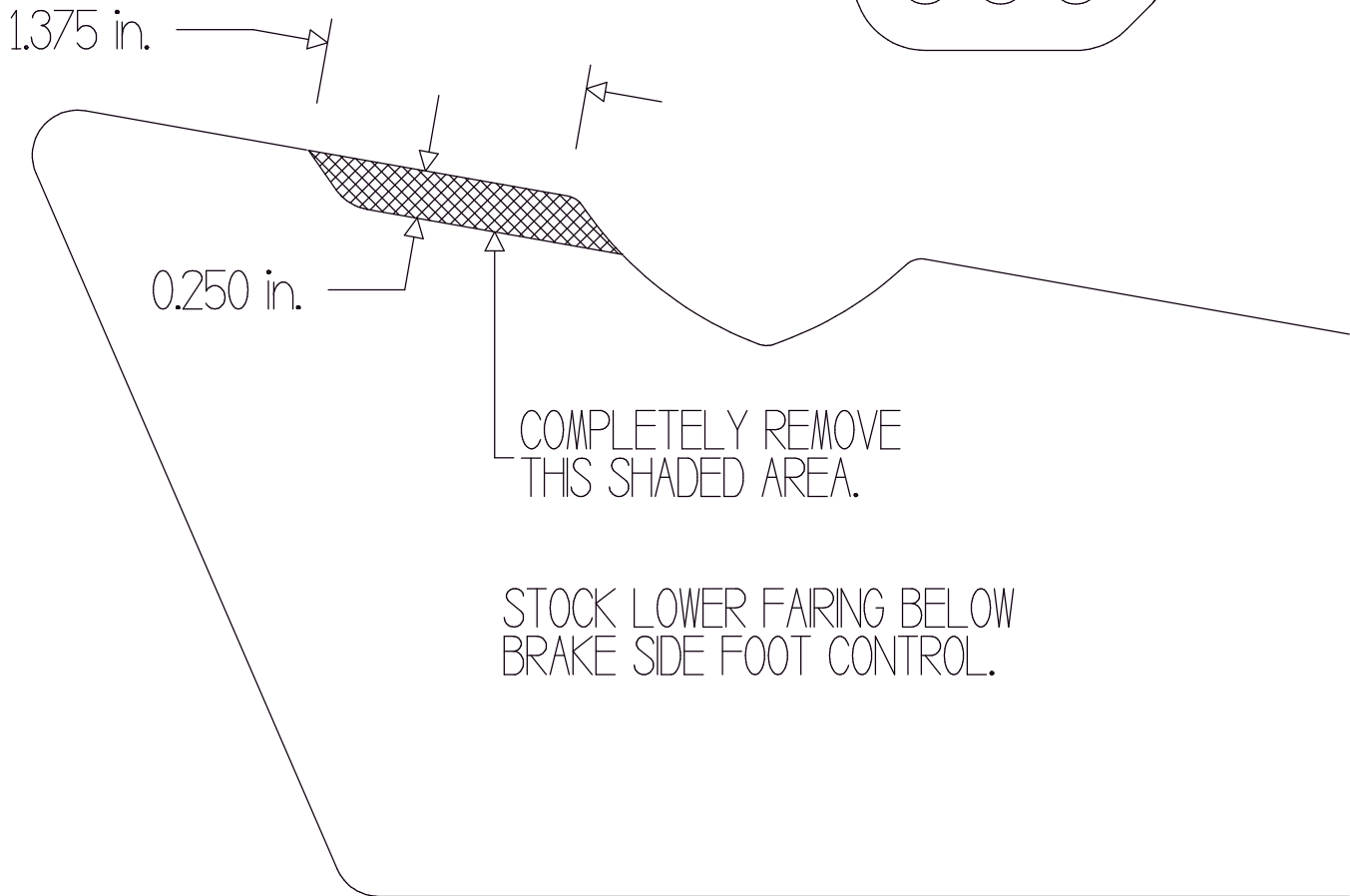


RS582 INSTRUCTIONS

TO BE INSTALLED BY A CERTIFIED MECHANIC ONLY | FOR RACE USE ONLY

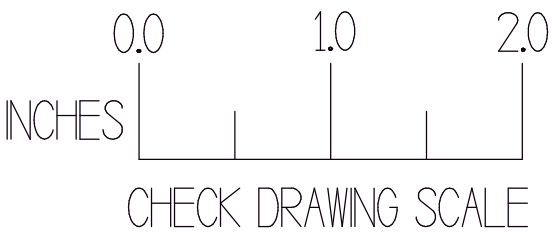


WHEN USING EITHER OF THESE TWO MOUNTING POSITIONS TRIM AWAY LOWER FAIRING AS SHOWN BELOW.



COMPLETELY REMOVE THIS SHADED AREA.

STOCK LOWER FAIRING BELOW BRAKE SIDE FOOT CONTROL.



VORTEX	
PART NAME : RS582 BRAKE SIDE BODY MOD	
DATE : 3-23-2011	SCALE : 1 : 1
DRAWN BY : S. AVOY	DO NOT SHRINK